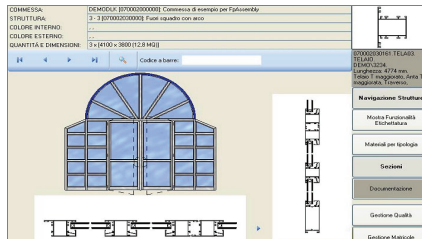


DL LINE

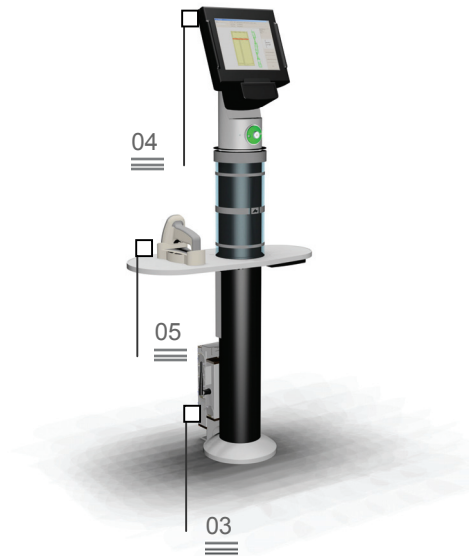
DL Technical Solution – DL Kit



DL Line 01

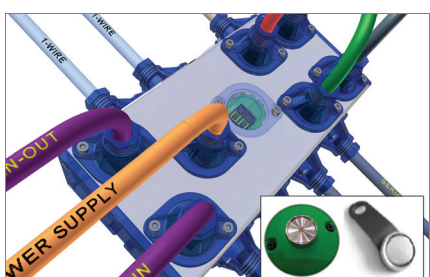


DL Quality 02



The DL KITS are preconfigured solutions as regards their hardware and software definitions, designed to meet specific needs within the production process and to allow a gradual, user-friendly introduction of the integrated IT production system. They are available in different versions involving the use of the Totem and one called Desktop. The Totem version allows placing the KIT on the shop floor without the aid of special fixtures or supports while the Desktop version, designed for greater flexibility, allows the KITS to be used on work stations where the Totem is not considered necessary. The type of network to be used (whether wireless or wired) will be defined according to the type of PC chosen by the customer. DL LINE is a KIT that enables the operator to view on the screen all the characteristics of the door/window selected (dimensions, cross sections, profiles, fittings, glass, panels, assembly drawings) simply by reading the bar code on any of its constituent profiles.

Cell, iButton probe (optional) 03



Industrial Tablet PC Filo 10" or Filo 15" 04



Bar code reader 05



DL LINE

DL Technical Solutions – DL Kit

01

DL Line

Using DL Line, the operator can open the style of which the selected workpiece forms a part, the software also provides him with a complete set of items of information that will be useful to him during assembly.

02

DI Quality

The software package developed for DL Line is complete with the DL Quality software package dedicated to CE marking. Thanks to this, the operator can display and compile the inspection plan to be performed on the style/job then archive the tests carried out and relative results, including any non-conformities plus relative corrective actions adopted.

03

Cell, iButton probe (optional)

By using the Cell and iButton Probe functions (optional), the information can be sent back to the office complete with production data (times, jobs, operators, machines), where they will be collected and processed by the Neural system.

04


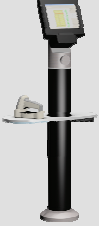


Industrial Tablet PC Filo 10" or Filo 15"

Filo is an industrial tablet PC coming in two versions: portable (Filo 10") or desktop (Filo 15"). It is provided with a touch-screen interface that allows the operator to use the software without the aid of a mouse or keyboard. It has been designed especially for the shop floor, hence it is dust- and spray proof etc. For Filo 10" there is provision for connection with WIFI network while for Filo 15" it is possible to choose between WIFI or wired network.

05

Bar code reader

The bar code reader enables the system to automatically identify the style and consequently the job order of which the workpiece in question forms a part.

Models	DL LINE			
	With Filo 15"	With Filo 10"	Arranged for FILO 10"	With FILO 15" desktop
CONFIGURATION				
Desktop computer FILO 15" with preinstalled software FP ASSEMBLY	•			•
Portable computer FILO 10" with preinstalled software FP ASSEMBLY		•		
Docking station for portable computer FILO 10"		•	•	
Cable bar code reader				•
Radio bar code reader	•	•	•	
Totem with console	•	•	•	
Table stand				•
Connection to wireless network	o	•	•	o
Connection to wired network	•			•
CELL	o	o	o	
iButton probe	o	o	o	
Wi-Fi adapter for CELL	o	o	o	
Lights and sound	o	o	o	
Support base	o	o	o	