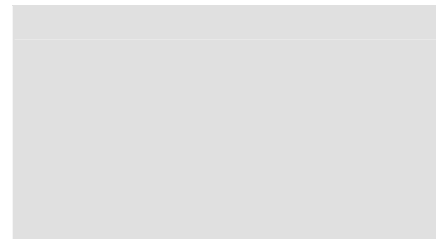


Full 2P

Automatic drilling machine



Control 01



Profile height probe 02



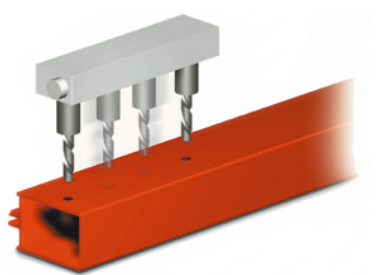
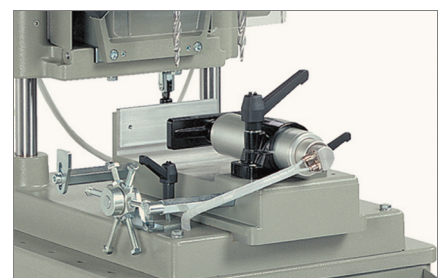
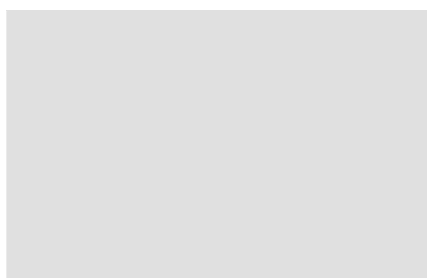
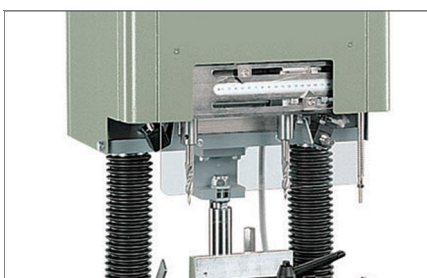
Complementary technologies play an important part in the workshop as the product line consists of various instruments designed to cater for special requirements. The Emmegi range offers a broad spectrum of dedicated machines for all the various milling, drilling, end-milling and filing operations as well as profile positioning and stop gauges.

Full 2P is a single-head drilling machine with electropneumatic downfeed and 2 spindles with variable centre distance. Pneumatically powered traverse of the moving drill head with provision for memorizing 2 centre distances. Rapid approach device with automatic profile height measurement. Clamp base adjustable along the Y axis, with provision for memorizing 6 positions.

Traverse of drilling unit 03

Lubrication 04

Stylus 05



Full 2P

Automatic drilling unit

01 Control

The control panel is provided with push buttons for machine movements and relative set-up.

02 Profile height probe

The height measuring system is mechanical in type. Thanks to the use of a spring mounted on a pin, it is able to measure the shape of the extruded profile and stop during the down movement in the presence of fins, thus allowing the height to be determined.

03 Traverse of drilling unit

Traverse of the second drilling unit is pneumatic. It is stopped upon reaching the stops previously set manually. It allows the possibility of setting the selected drilling dimensions.

04 Lubrication

The machine is provided with a spray-mist lubrication system based on water and oil emulsion, that ensures correct lubrication of the cutting tool.

05 Clamp

The machine is provided with a pneumatic horizontal clamp and low pressure device. The clamp is adjustable manually and ensures correct gripping of the profile in the machine.

TECHNICAL CHARACTERISTICS

Motor: 1.1 kW

Tool speed: 2250 rpm

Travel: 150 mm

Spindle centre distance, min./max 25/180 mm

Clamp capacity: 120x230 H mm

Tool locking with set screw

Cylindrical toolholder dia. 12 mm with wrench flat

Horizontal pneumatic clamp with low pressure device

Pair of drill bits with 2 diameters: dia. 6/11.5 x 120 mm positions

Spray-mist lubrication system with water and oil emulsion

Adjustable depth stop

Rod with 4 excludable stops

Compressed air gun for cleaning