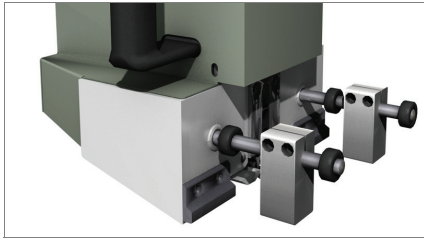




Pinza

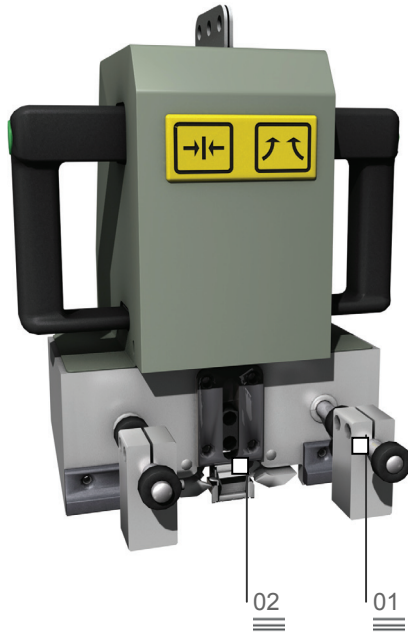
Crimper for Syncro® locking points



Pneumatic positioning on frame 01



Pneumatic activation of crimping 02



Pneumatic crimper for crimping the FAPIM Syncro® locking point on the frame. The crimper should be grasped with both hands and the locking point crimped by pressing the two push buttons on the handle in sequence.

Ergonomic design and safety 03



Pinza

Crimper for Syncro® locking points

01

Pneumatic positioning on frame

A pair of pneumatic hold-downs and a system of adjustable stops ensures precise and stable clamping of Pinza to the profile when the clamping pushbutton is pressed, thus creating optimum conditions for crimping.

02

Pneumatic activation of crimping

When the second push button is pressed, the pneumatic crimping system is activated. The special locking point of the FAPIM Syncro® system is positioned on and fixed to the profile.

The use of Pinza together with an assembly bench for Syncro® accessories enables the pneumatic stops to be used to make it easier to position the locking point.

03

Ergonomic design and safety

Due to its tailor-made specifications, this product is easy to handle and practical to use. It measures 230 x 290 x 250 mm and weighs just 9 kg. The special ergonomic handle with push button was designed to make Pinza easy to use even during long work sessions.

MEASUREMENTS

Dimensions (length x width x height) (mm)	230 x 290 x 250
Weight (kg)	9

MISCELLANEOUS

Maximum machinable profile width (mm)	80
Pneumatic activation of crimping	•
Pneumatic positioning of crimper on frame	•
Air consumption (l/min)	6,5