



# ***Voilàp Connect***

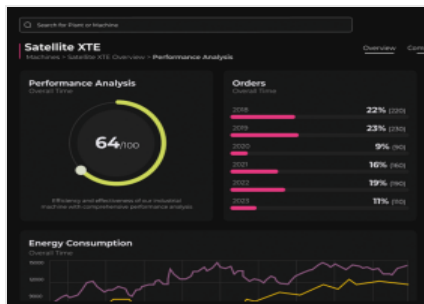
Software for machining  
centres



Voilàp Connect is a cloud-based IoT platform that allows operators and production managers to monitor their machines, energy consumption and production status anywhere and in real time.

The Connect Dashboard provides secure access to the history of all machine-generated data to analyse productivity, non-conformities, alarms and downtime.

Connect allows you to quickly measure and improve production capacity, reduce consumption and waste, and predict maintenance needs.



## Production efficiency

Voilàp Connect allows you to keep a clear overview of the tasks related to the different active jobs on your machines in order to promptly reschedule planning when necessary. It provides access to detailed information on the number of workpieces produced in order to assess machine productivity and identify any production delays or inefficiencies. To this end, it monitors any changes in machine status during the execution of each order.



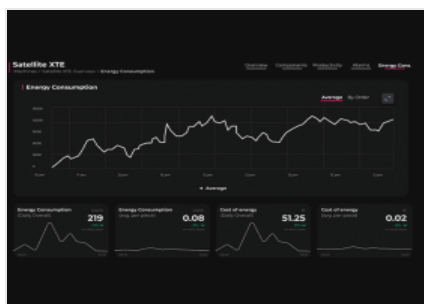
## Performance monitoring

Continuous monitoring of the working time to machine uptime ratio to improve machine utilisation planning and optimise operating efficiency.



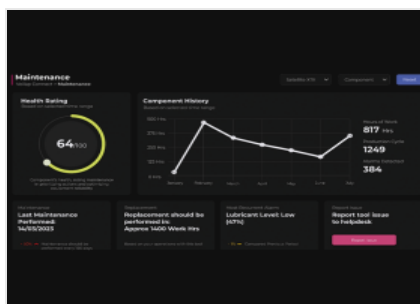
## Data security

Voilàp Connect does not use the customer's network to connect: the machine is equipped with an autonomous LTE connection channel, via a dedicated SIM, thereby creating a private, secure and encrypted network available worldwide. This solution connects the Edge device to the AWS IoT Secure Tunneling platform, allowing diagnostics, dashboards and field service activities to be isolated from the corporate network via TLS (Transport Layer Security) encryption.



## Energy consumption and energy saving

Voilàp Connect allows monitoring the energy consumed by machines on an hourly, daily, weekly and monthly basis. It is possible to quantify the energy consumption for the production of an individual workpiece as well as the average consumption over time of the machines, resulting in an overall monitoring of the company's energy consumption sources.



## Remote control

Voilàp Connect has a monitoring dashboard for analysing, at different times, the activity status of the machines and the production progress of the company. For each machine connected to the system it is possible to know the current status, the last order processed and its performance value.


**VOILÀP CONNECT / SOFTWARE FOR MACHINING CENTRES**
**MAIN CHARACTERISTICS**

	SILVER	GOLD
Real-time overview of the general conditions of each machine within the plant	●	●
Current machine status in real time: uptime, work time/downtime, etc.	●	●
Remote display of the list of active alarms on the machines	●	●
Trend creation and display of machine production efficiency	●	●
Cloud access to basic customer order status information	●	●
Creation and display of basic cloud-based production reports	●	●
Energy consumption measurement	-	●
Mobile device view mode	●	●
Measurement of compressed air consumption and filter status	-	●
SIM-based connectivity to eliminate the need to connect to the user's network	●	●
Database security with advanced measures to protect sensitive data	●	●

**IOT EQUIPMENT AND SERVICE**

	SILVER	GOLD
Data logger	●	●
Modem 4G	●	●
Antenna 4G	●	●
Machine Supervisor	●	●
Teleservice	●	●
Power consumption kit	-	●
Air consumption kit	-	●
IOT service Voilàp Connect 3 years	●	●
IOT service Voilàp Connect 5 years	○	○
IOT service Voilàp Connect 10 years	○	○

Included ● Available ○