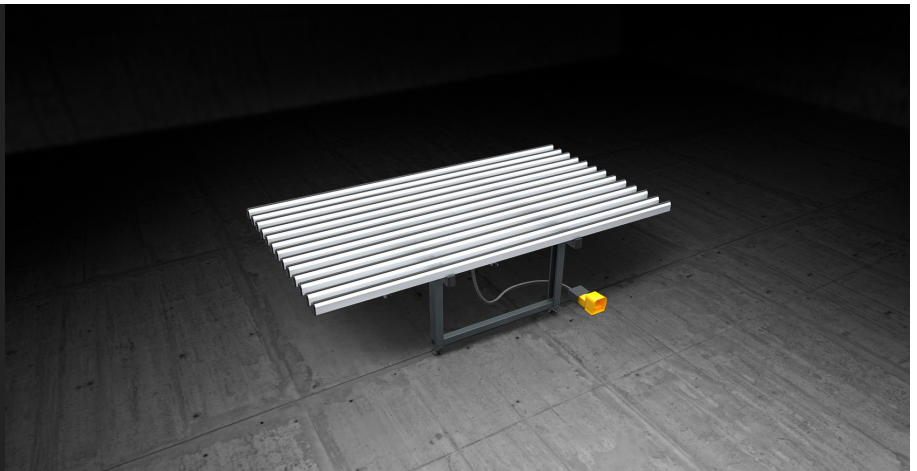
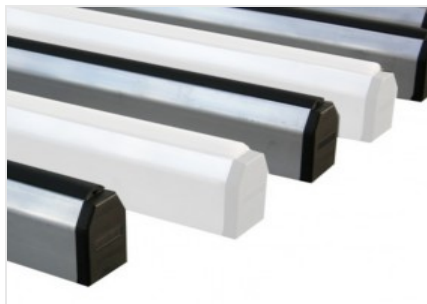
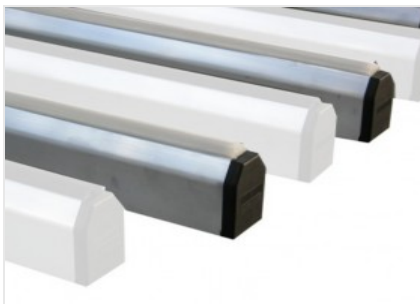


***FIT*****Manual assembly benches**

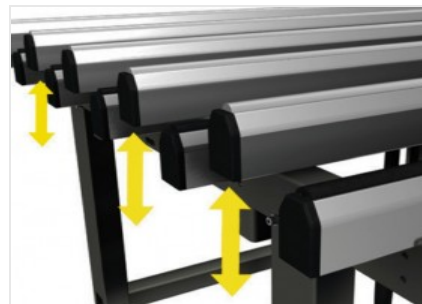
Sash and casement assembly bench. Horizontal bench with pneumatic exchange between the soft PVC resting surface (for assembly operations) and the anti-friction hard PVC resting surface (for handling operations). The work table height is adjustable from 895 to 965 mm and the mounting feet are complete with holes for floor anchoring.

**Surface in soft nonslip PVC**

The working surfaces are covered with soft nonslip PVC that provides secure support when positioning the frame.

**Support surface in hard anti-friction PVC**

The anti-friction hard PVC support surface ensures great smoothness of the frame allowing easy handling.

**Pneumatic bench exchange**

A pneumatic cylinder system operates the pneumatic exchange ensuring that the hard PVC support surface rises with respect to the soft PVC support surface.

**Adjustable feet**

Height adjustable feet to ensure the work bench can be positioned at the required height and perfectly flush with the other products in the Dynamic Line. The feet also have holes so they can be anchored to the floor.

**FIT / MANUAL ASSEMBLY BENCHES****CHARACTERISTICS**

Length (based on model) (mm)	1.400 ; 2.000 ; 2.500 ; 3.000
Width (mm)	1.600
Roller bench	<input type="radio"/>
Pneumatic lifting for glass	<input type="radio"/>
Air consumption (NI/cycle)	0,5
Load capacity (kg)	240

**WEIGHT (DEPENDING ON MODEL)**

FIT 1,600 X 1,400 mm (kg)	87
FIT 1,600 X 2,000 mm (kg)	96
FIT 1,600 X 2,500 mm (kg)	105
FIT 1,600 X 3,000 mm (kg)	115

Included ● Available ○