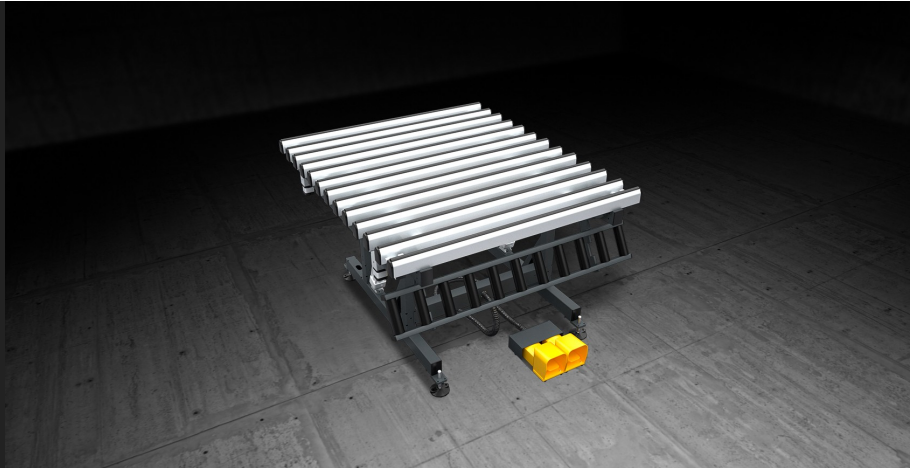




FIT T

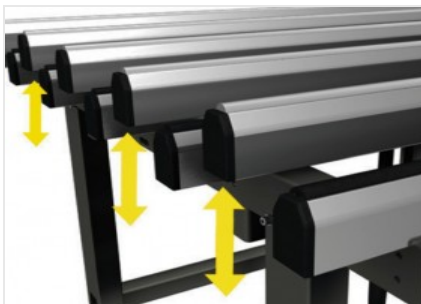
Manual assembly benches



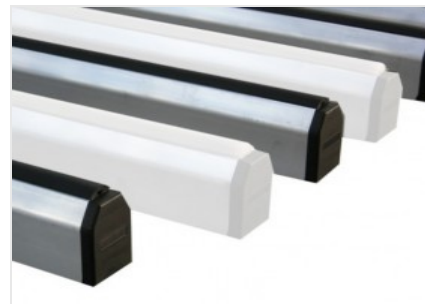
Sash and casement assembly bench. Tilting table from 0° (horizontal) to 85°, with pneumatic exchange between the soft PVC resting surface (for assembly operations) and the anti-friction hard PVC resting surface (for handling operations). The roller conveyor can be manually tilted and it is adjustable in height (from 170 to 460 mm) independently from the work table height. The work table height is adjustable from 895 to 965 mm and the mounting feet are complete with holes for floor anchoring.

**Tilting work bench**

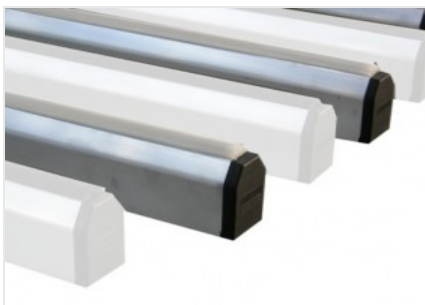
The work bench is tilting with fully pneumatic movement. By means of the footswitch, the work surface can be tilted from 0°, horizontal position, to 85°.

**Pneumatic bench exchange**

A pneumatic cylinder system operates the pneumatic exchange ensuring that the hard PVC support surface rises with respect to the soft PVC support surface.

**Surface in soft nonslip PVC**

The working surfaces are covered with soft nonslip PVC that provides secure support when positioning the frame.

**Support surface in hard anti-friction PVC**

The anti-friction hard PVC support surface ensures great smoothness of the frame allowing easy handling.

**Door sliding roller conveyor**

A manually-operated tilting roller conveyor with automatic locking to 2 preset positions allows horizontal translation of the frame by stem-mounted rollers that ensure smoothness and ease of movement.

**CHARACTERISTICS**

Length (based on model) (mm)	1.400 ; 2.000 ; 3.000
Width (mm)	1.600
Height adjustable roller conveyor (mm)	170 ÷ 460
Height adjustable work bench (mm)	895 ÷ 965
Weight (kg)	135
Roller conveyor width (mm)	150
Load capacity (kg)	120
Air consumption (NI/cycle)	25

Included ● Available ○