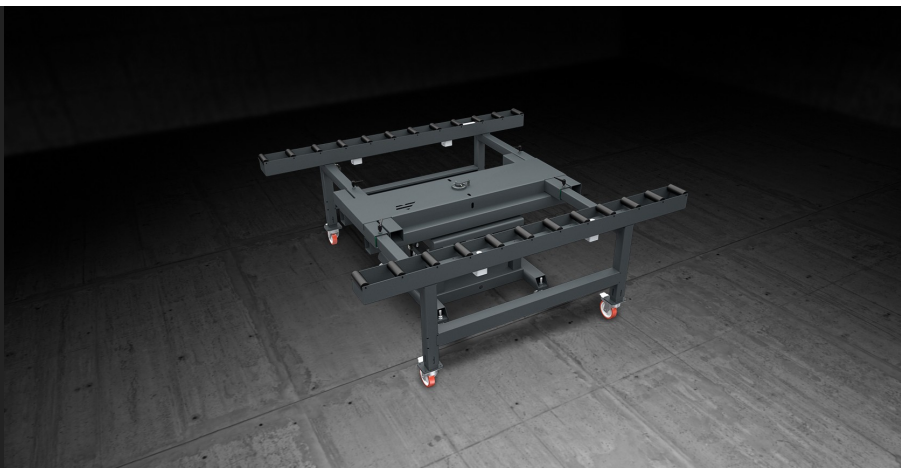




SPIN BENCH

Manual assembly benches



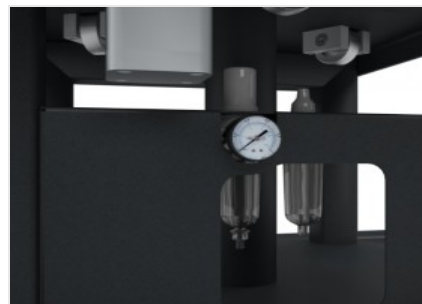
Modular bench for assembly and in-line handling of curtain wall frames. It is provided with two roller tracks covered with soft PVC sheathing; the distance between the two tracks is adjustable according to the width of the curtain wall section. A pneumatically operated system allows clamping the rollers during the work phases. The entire bench can be rotated by 360° in order to facilitate the assembly and sealing of the curtain wall; the angular position is clamped pneumatically.

**Rotation**

The entire bench can rotate 360° around the central structure to facilitate cell assembly and sealing operations. The angular position is locked with pneumatic control, by manual valve.

**Roller bench**

Façade cells are supported on 160mm-wide roller rows covered with a soft PVC sheath, thus minimizing the strain on the operator.

**Pneumatic control**

A pneumatic system controlled by manual valve allows the operator to control the blocking of the rotation of some rollers on each of the two rows; this makes assembly operations on the cell possible.

**Extension**

SPIN BENCH can be extended from 1,000 mm to 2,500 mm. Once the position of the rows has been determined, a number of locking handles allow the roller conveyor to be fixed in place, providing great versatility.

**SPIN BENCH / MANUAL ASSEMBLY BENCHES****WORK BENCHES**

Roller bench length (mm)	2.500
Roller bench min. width (mm)	1.000
Max. roller bench width with movable centre support (mm)	2.500
Min./max. frame dimension (mm)	500 x 1.000 ; 2.400 x 3.800

CHARACTERISTICS

Pneumatic roller locking system	●
Roller bench extendible in width with movable centre support	●
Height (mm)	940 ÷ 1.000
Air consumption (NI/min)	5
Load capacity (kg)	450
Weight (kg)	460

Included ● Available ○